



CARE AND MAINTENANCE OF THE BOA SYSTEM

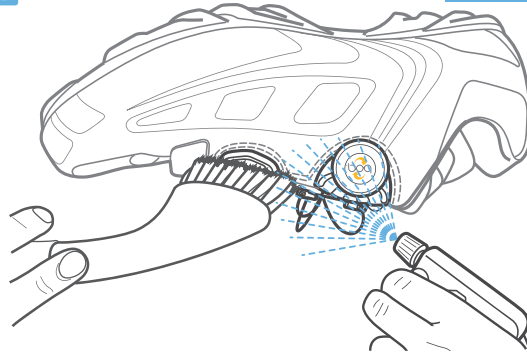
To get the best performance out of the **Boa Lacing System** you should clean the parts and cycle the lace through the system after every ride.

Recommended tools ▶▶



1

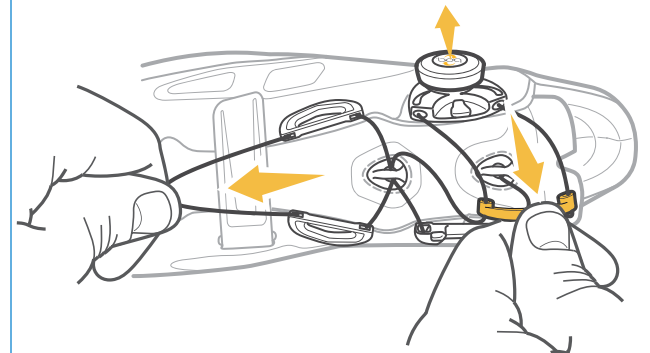
CLEAN THE SHOE



Make sure shoes are clean. Brush off dirt and mud. With the shoe upside down, use a spray bottle or hose and spray both the guides, lace and reel to clean the system.

2

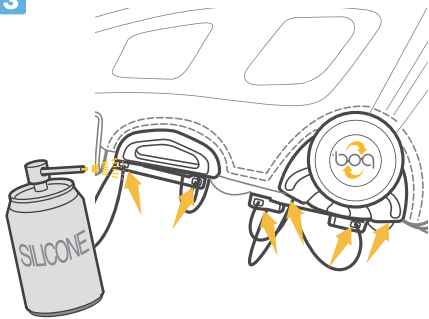
EJECT LACE FROM REEL



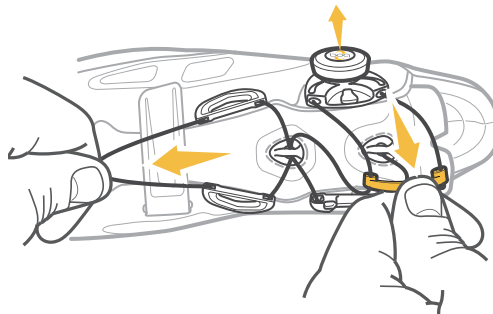
Open the knob, pull out all of the lace (eject all lace from reel)
Note: PowerZone should be disengaged

3

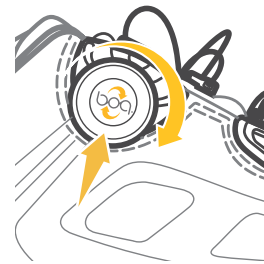
APPLY SILICONE AND CYCLE LACE - REPEAT 3 TIMES



Spray a small amount of silicone directly into the guides and reel. Re-cycle the lace through the system.

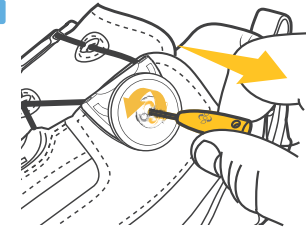


Open the knob and cycle the lace in and out of the guides and reel.



Close the knob and wind in the lace.

4



If there is no improvement:
Remove the knob and check to see if the lace is tangled.

MAINTENANCE INTERVALS

WHAT	WHEN
Inspect lace for wear	After every ride
Clean	After every ride
Lubricate	When necessary